



# 2024 annual report to the Community

## Parkside Primary School

Partnership: Greenhill South



School principal:

Adrianna Kyriacou

Date of endorsement:

03/02/2025



Government  
of South Australia  
Department for Education

# Context Statement

Parkside Primary School caters for students from R-6. At the time of this report, the enrolment in 2024 is 360. Parkside Primary School is classified as Category 7 on the Department for Education Index of Educational Disadvantage. At the time of this report, the school population includes 1% Aboriginal students, 4% students with disabilities, 7% students with English as an additional language or dialect (EALD) funded background, 1% children/young people in care. Further information about the school is available on the school's website (including its context statement), as well as the My School website.

Data Source: Department for Education data holdings from Mid census captured in AUGUST 2024.

## Governing Council Report

What a wonderful year we have experienced at Parkside Primary School! As Chairperson of the Governing Council, I have led a wonderful group of parents in supporting the amazing leadership team we have here at Parkside. I have so enjoyed exploring the learning our children experience within the classroom; thank you to Kat Quintana & Emma Bischoff for providing fascinating insights, most of which we don't get from our children!!

Our first community event at Parkside was the Fig Tree Night. It was an evening of fun and family and, as always, is a great way for new and existing families to meet and get to know others. The kids always have fun at school after hours – there's something special about being at school at night!

Throughout the year, we held the Mother's and Father's Day stalls. These are run by our wonderful POP committee and I would like to thank everyone who volunteered their time – Parkside is very lucky to have you. The money raised went towards our wonderful new playground.

Speaking of our playground, what a fantastic addition to Parkside! While the Western Playground was always a popular play space, it was looking a bit tired and the decision was made to upgrade to a more modern version. After much consultation, Adrianna finalised the design and it was erected with some verbal and visual assistance from the students who had a wonderful time watching the builders do their thing!

Another space that is used by many students is the Reset Space. Our wonderful Assistant Principal and Wellbeing leader Kylie Newbold has been instrumental in making this space what it is and I can say from personal experience, it has helped my child immensely when she has been anxious. With more grants available to us in 2024, we were able to track students and the Wellbeing committee worked with Kylie to organise a parent resource section enabling parents to borrow resources.

Quiz night was back and what a night it was! The theme was P and what a variety of costumes there were. From Pharaoh's to the Pope, Pink Ladies to Pink Flamingos, the effort everyone went to was evidence of how much our parents love a night out without the kids!! Hosted by the amazing Jason Newbold, who has a hidden talent for quiz hosting, the questions were challenging and often made us all feel old! A huge thank you goes to the POP committee who made the night possible, especially Rachel, Natasha, and Marnie. Funds raised also contributed to the cost of our new playground.

In third term, Jenna Krinas our wonderful Deputy was successful in winning a role as a policy advisor within the Department around wellbeing and engagement. Kylie Newbold won the position of Deputy Principal with Simone Segat stepping in as Assistant Principal. Both Kylie and Simone were seamless in their transition and we thank them for their contribution in those positions.

It was my privilege to present the teachers and leadership team at Parkside with gifts on World Teacher's Day. Our teachers work tirelessly to ensure our children receive the best education to impact students and their learning. Thank you to Katrina Waters for her amazing help organising the Haigh's gifts. The teachers also received personalised cards with a quote from one of their students inside.

Our canteen underwent management changes throughout 2024. The canteen is a well-oiled machine and we are very fortunate at Parkside to have a canteen that utilises produce from our school garden, along with providing healthy recess and lunch options for our students. New canteen management will begin in 2025 and we will have some stability in staffing so we can continue to provide the same wonderful service. Canteen prices were also increased in 2024. It was pre-Covid when the prices last increased and, while the canteen is non-profit, with costs rising the Governing Council made the decision to raise prices to allow the canteen to continue running.

2024 also saw the commencement of traffic changes on Glen Osmond Rd. The Governing Council and leadership team at Parkside have been fighting for years to see changes in the extremely dangerous intersection of Young St, Glen Osmond Rd & Kenilworth St. The council approved the upgrade and work commenced in November. The completed changes have made a sizeable difference to safety and there has been positive feedback from the community. Thank you to the members of Governing Council who supported these changes by writing letters or contacting ministers.

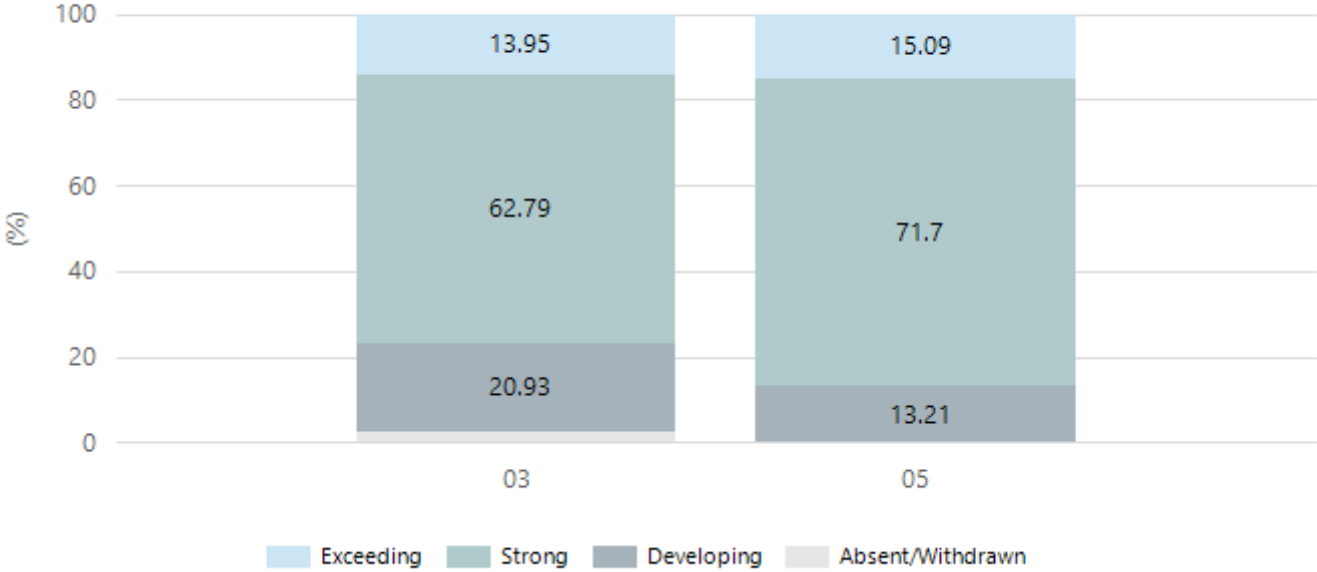
Finally, I would like to thank my fellow members of Governing Council and the Parkside leadership team for their constant support. It has been a privilege to be Chairperson of a school that is so dear to my heart. Governing Council provides an integral role in advising and supporting this school and I encourage parents to join and reap the benefits.

# Performance Summary

## NAPLAN Proficiency

In 2023 the Australian Curriculum, Assessment and Reporting Authority (ACARA) - a Commonwealth Independent statutory authority - announced changes to NAPLAN performance reporting. The new approach replaces the previous numerical NAPLAN bands and the national minimum standard.

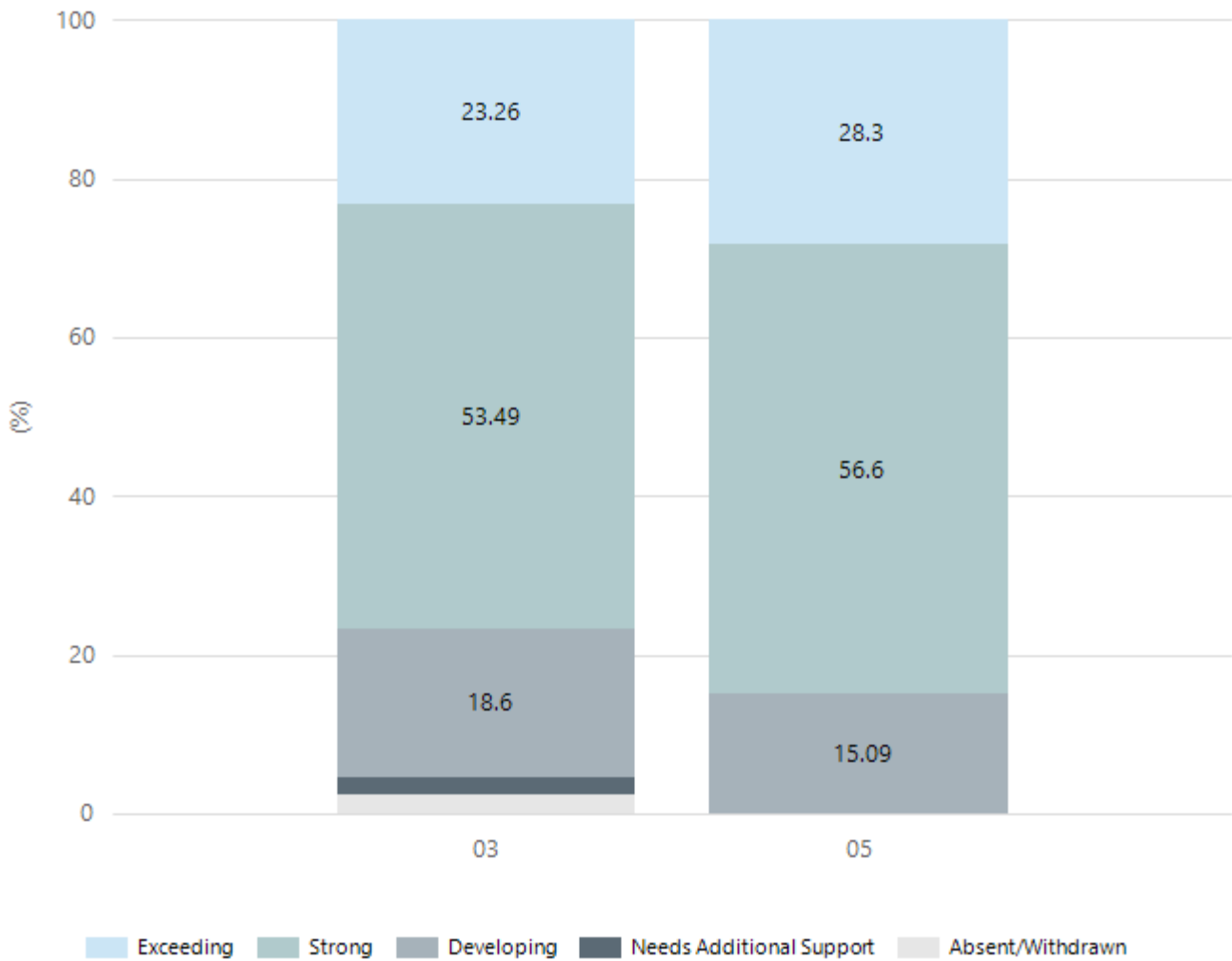
### Numeracy



Year Level	03	05
Exceeding	6	8
Strong	27	38
Developing	9	7
Absent/Withdrawn	1	
Total	43	53

Data Source: Department for Education Assessment Data Holdings, 2024. If there are less than 6 students who sat NAPLAN in a school, no information will be shown. If a year level has less than 6 students, that year level will not be shown in NAPLAN results.

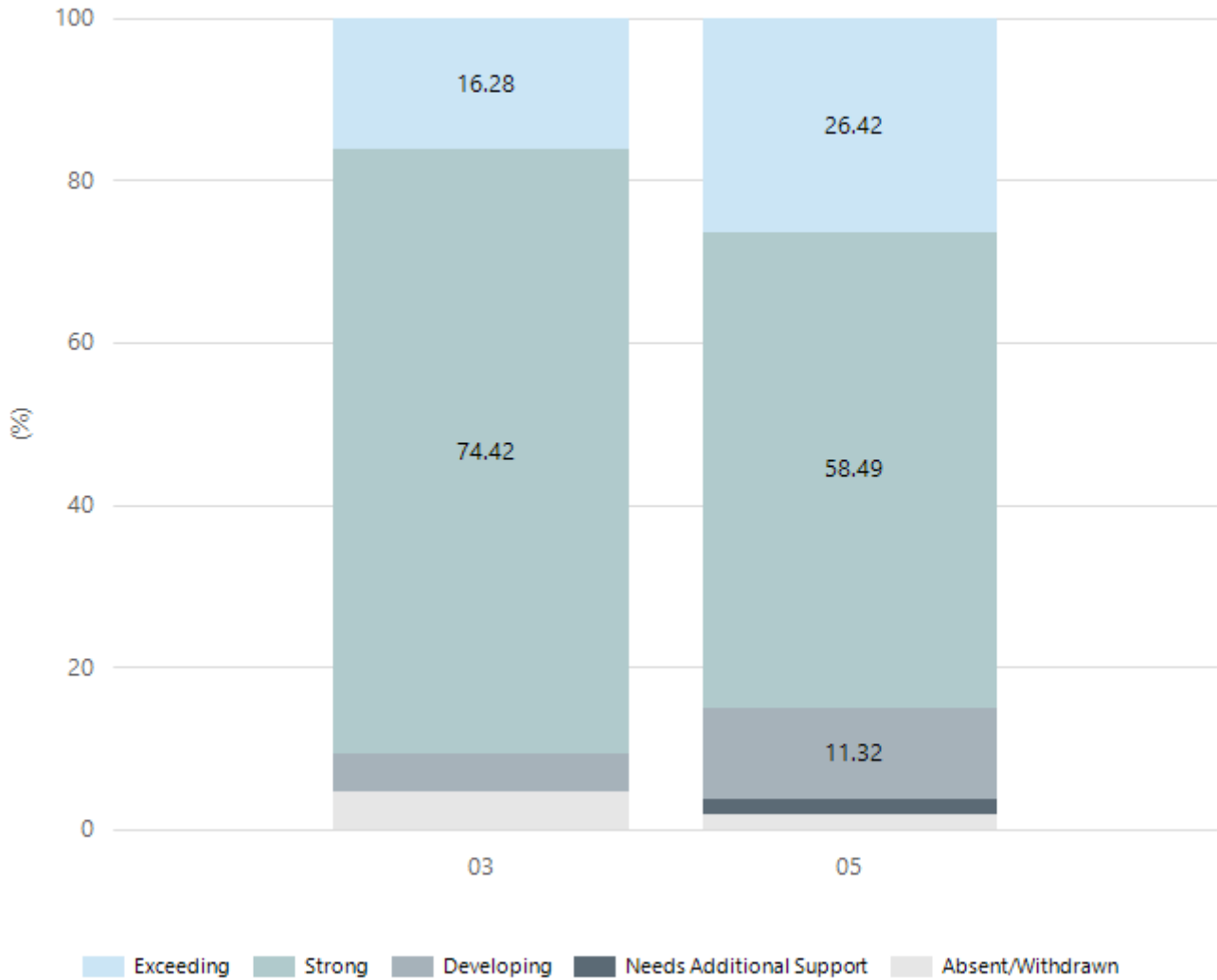
## Reading



Year Level	03	05
Exceeding	10	15
Strong	23	30
Developing	8	8
Needs Additional Support	1	
Absent/Withdrawn	1	
Total	43	53

Data Source: Department for Education Assessment Data Holdings, 2024. If there are less than 6 students who sat NAPLAN in a school, no information will be shown. If a year level has less than 6 students, that year level will not be shown in NAPLAN results.

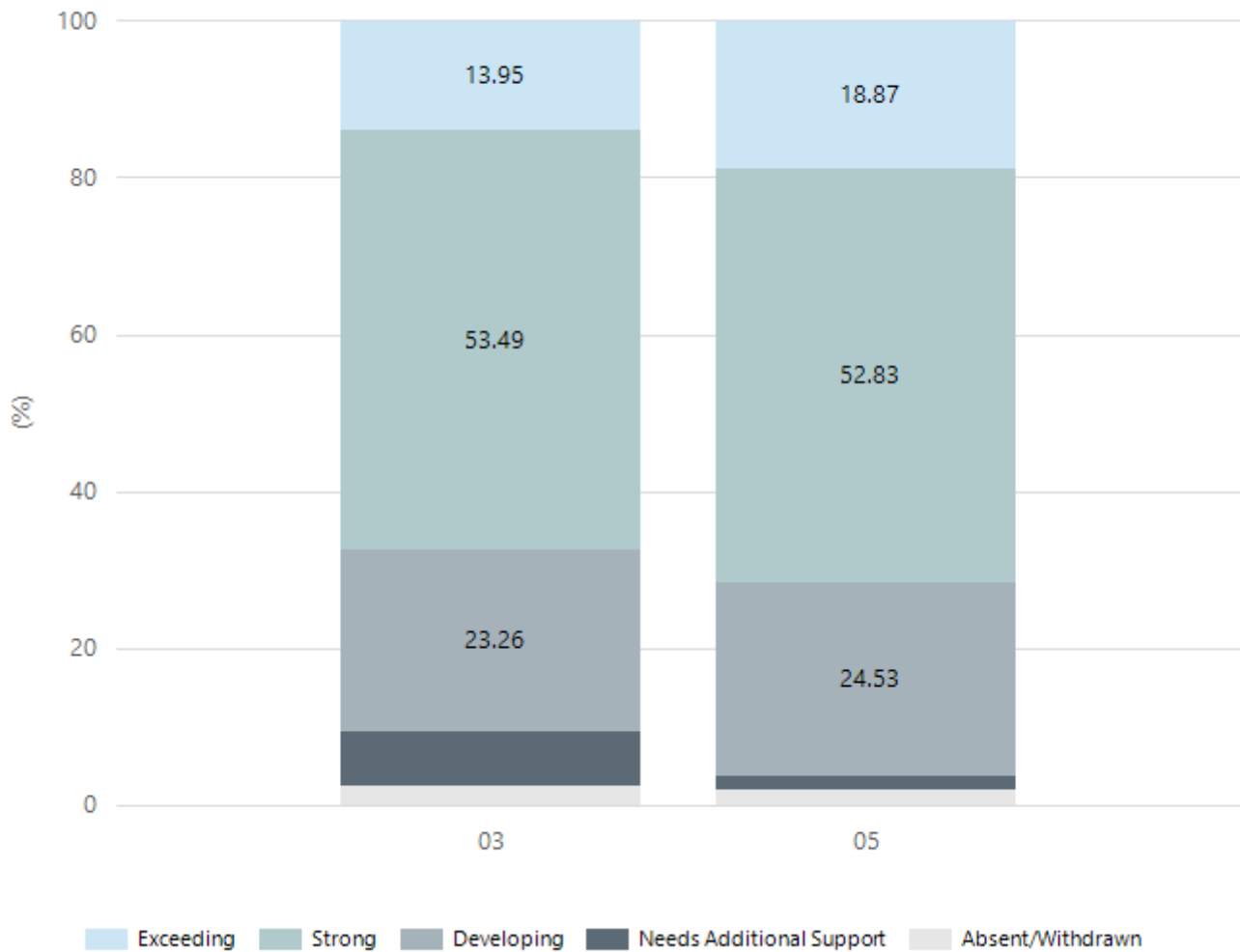
## Writing



Year Level	03	05
Exceeding	7	14
Strong	32	31
Developing	2	6
Needs Additional Support		1
Absent/Withdrawn	2	1
Total	43	53

Data Source: Department for Education Assessment Data Holdings, 2024. If there are less than 6 students who sat NAPLAN in a school, no information will be shown. If a year level has less than 6 students, that year level will not be shown in NAPLAN results.

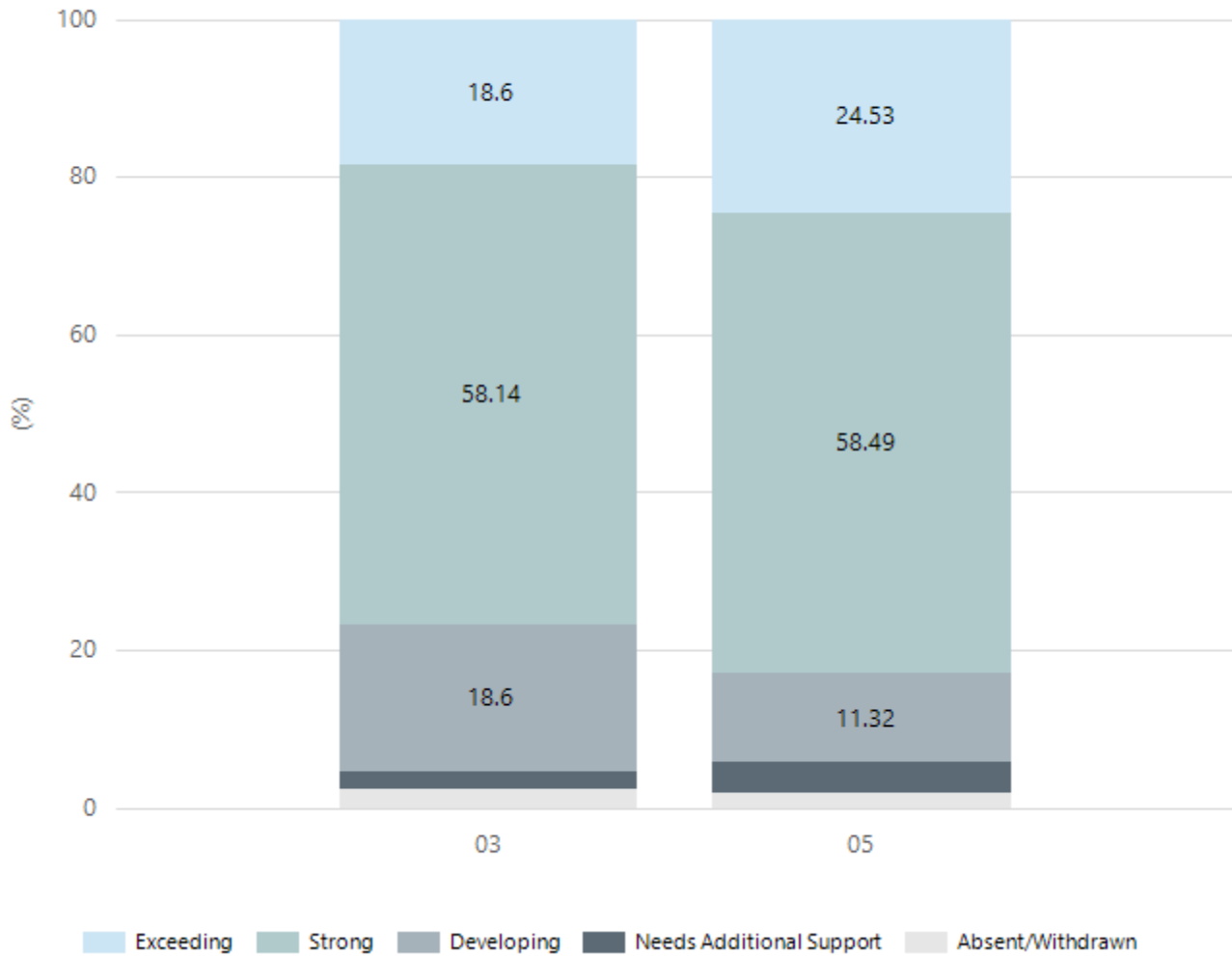
## Grammar



Year Level	03	05
Exceeding	6	10
Strong	23	28
Developing	10	13
Needs Additional Support	3	1
Absent/Withdrawn	1	1
Total	43	53

Data Source: Department for Education Assessment Data Holdings, 2024. If there are less than 6 students who sat NAPLAN in a school, no information will be shown. If a year level has less than 6 students, that year level will not be shown in NAPLAN results.

## Spelling



Year Level	03	05
Exceeding	8	13
Strong	25	31
Developing	8	6
Needs Additional Support	1	2
Absent/Withdrawn	1	1
Total	43	53

Data Source: Department for Education Assessment Data Holdings, 2024. If there are less than 6 students who sat NAPLAN in a school, no information will be shown. If a year level has less than 6 students, that year level will not be shown in NAPLAN results.

## School Attendance

Year Level	2022	2023	2024
Reception	93.2%	89.6%	91.5%
Year 01	84.5%	92.1%	87.5%
Year 02	91.3%	90.6%	91.2%
Year 03	87.3%	92.9%	89.8%
Year 04	88.6%	93.0%	92.2%
Year 05	92.4%	91.9%	92.7%
Year 06	87.8%	93.7%	91.6%
Total	89.2%	92.2%	91.1%

Data Source: Department for Education Attendance Data, Semester 1 Report 2024. A blank cell indicates there were no students enrolled. 'Primary Other' includes students enrolled in specialised education options. 'Secondary Other' includes students who have already spent a year at Year 12 and elected to undertake further study at Year 12.

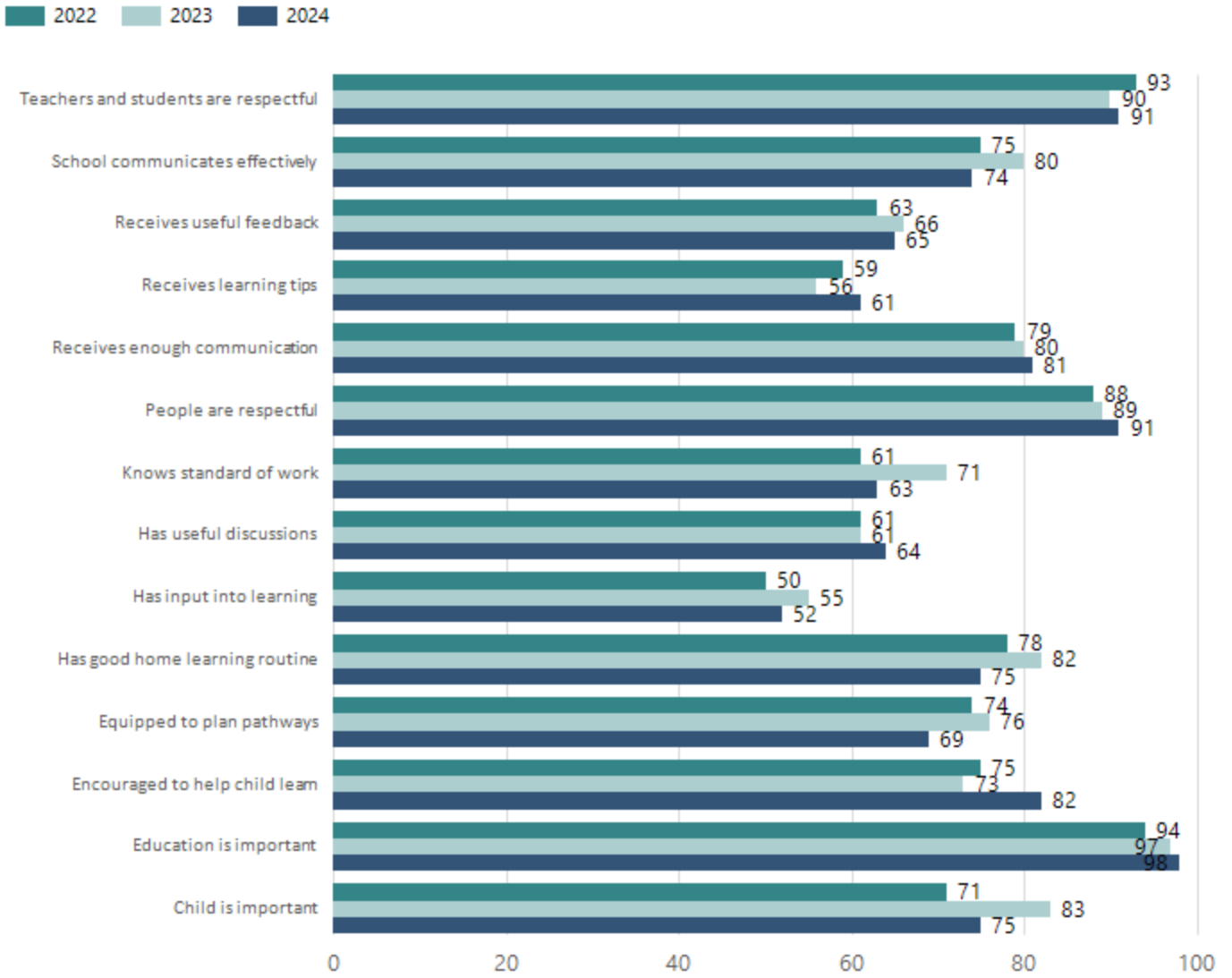
## Attendance Comment

In South Australia, all children and young people must be in school from 6 years to 16 years old. They must attend a government or non-government school full time. From age 16 to 17 however, young people must attend school or an approved learning program (such as an apprenticeship, traineeship, accredited course or university). Schools and parents must encourage and support students to come to school every day. Parents and caregivers must make sure their child is enrolled in a school, and attends school all day and everyday it is open, unless a child is sick or has an approved exemption. Teachers and leaders actively follow up when a student misses school, including recording all absences and non-attendance. All schools in South Australia have local attendance procedures governed under the Education and Children's Services Regulations 2020.



# School Parent Opinion Survey Results

Proportion of agree/strongly agree response(%)



Data Source: 2024 Department for Education Parent Opinions Survey, Term 3 2024.

# Intended Destination

Leave Reason	Number	%
OV - LEFT SA FOR OVERSEAS	2	20.0%
TG - TRANSFERRED TO SA GOVERNMENT SCHOOL	8	80.0%

Data Source: Department for Education Destination Data Report, 2024. Data extract term 3 2024. Data shows recorded destinations for students that left the school in the previous year. Data is uploaded by schools in term 3 and may not reflect final or total figures at time of report creation.

## Highest Qualifications held by the teaching workforce and workforce composition

All teachers at this school are qualified and registered with the SA Teachers Registration Board.

Qualification Level	Number of Qualifications
Bachelor's degrees or Diplomas	20
Postgraduate Qualifications	8

Data Source: Data extracted from Mandatory Workforce Information Collections as on the last pay date of June 2024. As self-reported by staff in the system.

Please note: Data includes staff who are Actively employed and on extended paid leave. Please note only the highest qualification of the Teaching staff is reported. Excludes any number of other certifications earned.

### Workforce composition including indigenous staff

	Teaching Staff		Non-Teaching Staff	
	Indigenous	Non-Indigenous	Indigenous	Non-Indigenous
Full-Time Equivalents	0.0	23.6	0.0	8.4
Persons	0.0	28.0	0.0	12.0

Data Source: Data extracted from Mandatory Workforce Information Collection as on the last pay date of June 2024.

Please note: Data includes staff who are actively employed and on extended paid leave. "Indigenous category" is self-reported by staff in the system.

## Financial Statement

Funding Source	Amount
Grants: State	\$3,551,704.95
Grants: Commonwealth	\$2,400.00
Parent Contributions	\$147,626.66
Fund Raising	\$24,809.46
Other	

Data Source: School supplied data.